

# 2024 Annual Project Report

Swan River First Nation  
Ecological Reconciliation Project



Project  
Forest

# Contents



<b>ACKNOWLEDGEMENT</b>	<b>3</b>
<b>ABOUT US</b>	<b>4</b>
Our Mission	4
Our Values	4
<b>OVERVIEW</b>	<b>5</b>
How to Use This Report	5
Forest Facts	6
<b>2024 ACTIVITY SUMMARY</b>	<b>7</b>
UN SDG 15 - Life on Land	8
UN SDG 06 - Clean Water and Sanitation	11
UN SDG 13 - Climate Action	12
<b>2023 ANNUAL REPORT</b>	<b>13</b>
UN SDG 15 - Life on Land	14
UN SDG 13 - Climate Action	19
UN SDG 11 - Sustainable Cities and Communities	21
<b>POSITIVE IMPACT</b>	<b>24</b>
UN SDG 2 - Zero Hunger	24
UN SDG 3 - Good Health and Well-Being	25
UN SDG 6 - Clean Water and Sanitation	26
<b>FUNDING PARTNERS</b>	<b>27</b>
References	28
Appendix A - Survey Report	29
Appendix B - As Planted Report	44

# Land Acknowledgement

## | Traditional Territories



Member of Cumberland House Cree Nation at the CHCN Food and Medicine Forest

**Project Forest acknowledges** that our work is conducted on both Treaty and non-Treaty lands. These lands are the traditional territories of First Nations and Indigenous Peoples. We recognize that our work is intertwined with the deep and diverse histories of Indigenous Peoples. We are grateful for the opportunity to work in these territories and are committed to the recognition and respect of those who live or have lived, travelled, and gathered on these lands for time immemorial.

# About Us

## | Our Mission and Values

# Rewilding Canada, one forest at a time.

Project Forest is a non-profit organization working in partnership with conservation groups, Indigenous communities and Canadian businesses to make a positive environmental and social impact in our communities through planting forests. The forests we plant clean the air and water, increase biodiversity and contribute to the overall health and well-being of our communities.



## Our work is rooted in our values.

### Responsibility

We believe it is our responsibility to use our skills, knowledge, and experience to bring about positive change in the world.

### Reciprocity

We recognize that we have benefited from the earth's resources and are committed to giving back through careful and thoughtful solutions.

### Humility

We are grateful for the opportunity to learn from nature, to contribute to improving our environment, and to make a positive impact in people's lives.

### Transparency

We document, monitor, and share our processes and findings with partners and the public—every step of the way, on every project.

### Community

We create spaces where people can connect with nature, and each other. We respect every community we are invited into, and work together to make positive change.

# Overview

## | United Nations Sustainability Development Goals

### Goals to Transform Our World

Planting new forests is critically important in addressing the challenges of our time, particularly when aligned with the United Nations Sustainable Development Goals (UN SDGs). As our communities grapple with climate change and biodiversity loss, forests emerge as pivotal solutions that intersect with multiple UN SDGs including, combating climate change and preserving biodiversity, fostering economic development, ensuring food security, promoting clean water access, and advancing social equity. Aligning the impacts of our forests with the UN SDGs is essential for communicating to stakeholders our dedication to sustainability, transparency, and the measurement of progress over time.

In our 2023 Annual Report, we have linked the outcomes of our rewilding projects with relevant UN SDG targets and indicators, as well as aligned them with corresponding Environment, Social, and Governance goals. This comprehensive approach ensures that our partners have readily accessible information for corporate sustainability reporting, simplifying the process and enhancing transparency.



### Purpose & Positive Impact

The following UN SDGs are impacted by the Swan River First Nation Ecological Reconciliation Project:

#### Purpose



#### Positive Impact



# Overview

## | Forest Facts

### About the forest you funded.

#### NAME

Project Forest Swan River First Nation Ecological Reconciliation Project

#### LOCATION

Swan River First Nation, Treaty 8 Territory

[55°20'23.8"N 115°24'12.1"W](#)

#### DATES PLANTED

Fall 2021, Spring 2023, Fall 2024

#### SIZE

44 hectares

#### TOTAL SEEDLINGS PLANTED

92,910

#### TOTAL SPECIES PLANTED

14

#### TOTAL CO2 REMOVED FROM THE AIR

58,262 metric tonnes

#### SPECIES PLANTED

##### Planted in 2021:

White Spruce (30,600)  
Lodgepole Pine (10,260)  
Tamarack (10,080)  
Willow (2,880)  
White Birch (2,700)

##### Planted in 2024:

White Spruce (21,060)

##### Planted in 2023:

Saskatoon (3,240)  
Raspberry (500)  
Wild Strawberry (540)  
American Mountain Ash (510)  
Bog Cranberry (2,160)  
Dewberry (2,180)  
Wild Rose (480)  
Red Osier Dogwood (2,760)  
Buffaloberry (2,960)



# 2024 Activity Summary Report Swan River First Nation Ecological Reconciliation Project

This summary reframes the key findings from the Swan River First Nation Ecological Reconciliation Project survey reports through the lens of three relevant UN Sustainable Development Goals (SDGs).



## | UN SDG 15 - Life on Land

**Goal:** Sustainably manage forests, combat desertification, halt biodiversity loss.

**The Challenge:**

Project Forest conducted a stocking survey at Swan River First Nation on October 6–7, 2024, assessing 98 plots across 34 hectares. The objective was to assess reforestation success and biodiversity. The additional 10ha of land planted with white spruce the fall of 2024 will not be surveyed until the fall of 2025.

**The Reality:**

2024 survey results indicate that 91.8% of assessed plots meet acceptable stocking standards (SR + NSR-LIG). Key findings include:

**Reduction in NSR-LIG:** The proportion of NSR-LIG plots declined from 25.5% to 10.2%, demonstrating strong seedling vigor and resilience.

**Decrease in NSR Plots:** NSR plots decreased from 13.3% to 8.2%, indicating natural ingress of desirable woody vegetation. This regeneration is attributed to mechanical site preparation, which exposed mineral soil and created high-quality microsites for seed germination from the existing natural seed bank.

The planting of white spruce (*Picea glauca*) at Swan River First Nation carries both ecological and cultural significance. In the 1950s and 1960s, large-scale removal of mature white spruce along the south shore of Lesser Slave Lake, driven by unsustainable forestry practices, led to a long-term shift in forest composition toward aspen and balsam poplar dominance. By reintroducing white spruce, this initiative is reversing historical biodiversity loss, enhancing structural diversity, and restoring ecosystem function.

This project exemplifies SDG 15 targets by combating land degradation, promoting the recovery of native species, and supporting sustainable forest management that benefits both biodiversity and local communities.

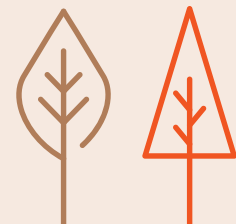


91.8%

Seedling Survival Rate

21,060

New Trees Planted



## | UN SDG 15 - Life on Land



### The Context:

The 2024 survey recorded a survival rate exceeding Project Forest’s 80% target, marking the third post-planting evaluation of rewilding outcomes at the site. The findings reflect the effectiveness of the collaborative partnership between Project Forest and Swan River First Nation in advancing ecological restoration goals.

This performance directly contributes to UN SDG Target 15.1—the conservation and sustainable use of terrestrial ecosystems—and UN SDG Target 15.3—the restoration of degraded land—by delivering measurable, on-the-ground regeneration of native forest cover.

### The Obstacle:

While the site is largely progressing as expected, some areas present challenges due to dense herbaceous competition, particularly thick grass mats and Canada thistle. These species were frequently observed within and around NSR and NSR-LIG plots, where they may limit seedling growth and establishment. Recognizing that, in Cree culture, all plants have a role and value in the ecosystem, management approaches will focus on balancing species presence to support native species regeneration while maintaining ecological integrity. Continued monitoring and culturally respectful vegetation management planning will be undertaken in collaboration with Swan River First Nation.

This approach aligns with UN SDG Target 15.1 (conservation and sustainable use of terrestrial ecosystems) and Target 15.3 (restoration of degraded land) by applying site-specific, culturally informed practices that enhance regeneration outcomes.

**Table 1: 2024 Stocking Summary**

Type of Plot	# of Plots 2023	% of Plots 2023	# of Plots 2024	% of Plots 2024
Total Sufficiently Restocked (SR)	60	61.2	80	81.6
NSR-Let It Grow (NSR-LIG) Stocking	25	25.5	10	10.2
Not Sufficiently Restocked (NSR)	13	13.3	8	8.2
Total Stocking (SR + NSR-LIG/Total # of Plots)	85	86.7	90	91.8

## | UN SDG 15 - Life on Land

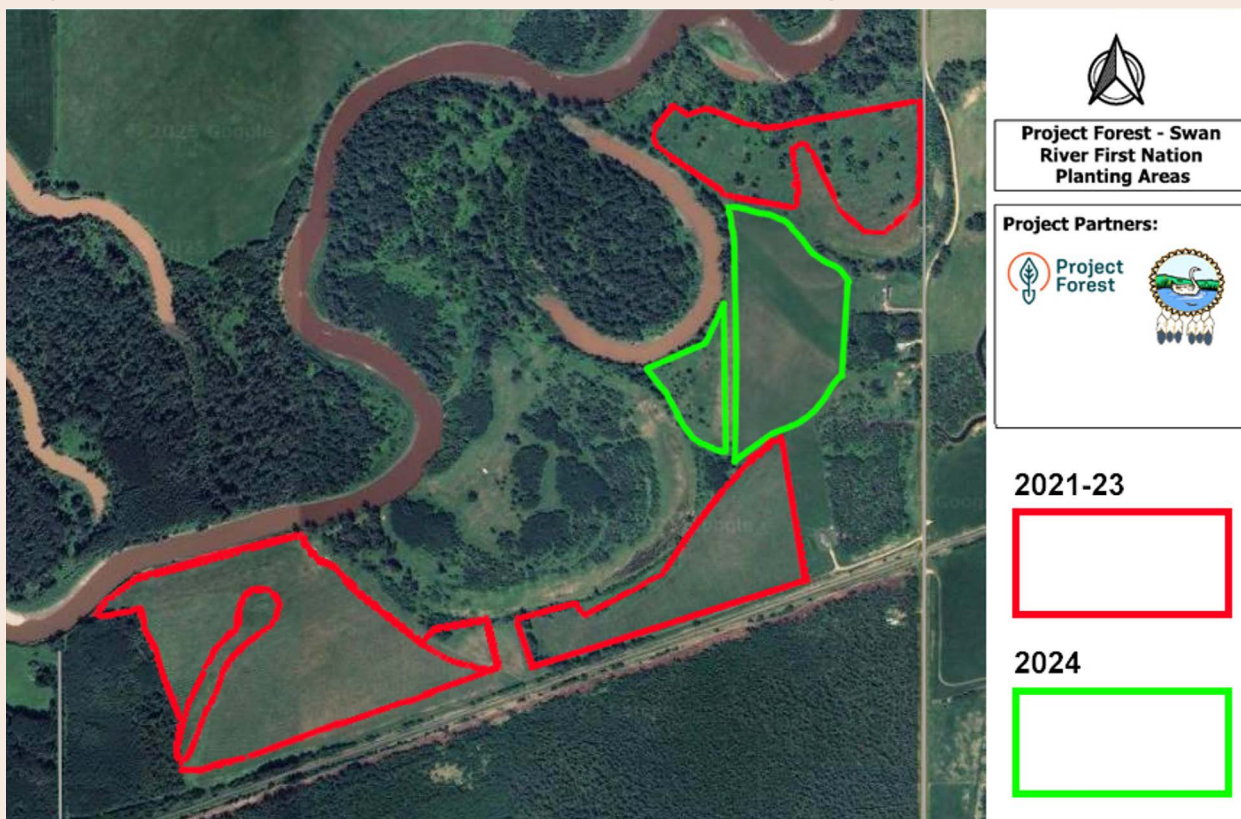


The 2024 site survey at Swan River First Nation recorded native shrub establishment in 48% of assessed plots. This is a positive indicator that the site is developing early-stage understory complexity and habitat potential, key components in building long-term forest resilience.

The results reflect measurable progress toward a structurally diverse and ecologically functional forest ecosystem, supporting UN SDG Target 15.1 (conservation and sustainable use of terrestrial ecosystems) and Target 15.3 (combating land degradation and restoring degraded land). These results showcase how science-based restoration, combined with the cultural knowledge and stewardship of Swan River First Nation, is accelerating the return of a healthier, more biodiverse landscape.

By re-establishing native forest structure and enhancing habitat diversity, the project is not only restoring ecosystem function but also strengthening the cultural and ecological bonds that connect people to the land—delivering lasting progress toward the vision of UN SDG 15.

**Figure 1: 2024 Swan River First Nation New Planting Site**



21,060 White Spruce Trees planted on 10 new hectares of land at Swan River First Nation

# | UN SDG 6 - Clean Water and Sanitation



**Goal:** Ensure availability and sustainable management of water and sanitation for all.

Note: The numbers reflected here are for annual rainfall only. While snowfall does create available soil water, the actual number is impossible to verify due to run off and melting events while ground conditions are frozen and trees aren't transpiring.

Rain accumulation for Swan River First Nation Ecological Reconciliation Project in 2024 was as follows:

- Original site (34ha): 485.2 mm of rain ≈ 165 million liters of water
- New planting site (10ha) over two months: 5,430,000 liters of water
- 170,398,000 liters total rainfall for 2024

**Table 2: 2024 Swan River Annual Precipitation on Original Site**

	Step Description	Formula/Conversion	Rainfall
1	Area of land	1 hectare = 10,000 m <sup>2</sup>	34 ha × 10,000 = 340,000 m <sup>2</sup>
2	Convert Depth to Meters	cm ÷ 100; mm ÷ 1000	485.2 mm = 0.4852 m
3	Volume (m <sup>3</sup> )	Volume = Area × Depth	340,000 × 0.4852 = 164,968 m <sup>3</sup>
4	Convert to Liters	1 m <sup>3</sup> = 1,000 liters	164,968 × 1,000 = 164,968,000 liters
<b>Total Accumulation = 164,968,000 liters</b>			

**Table 3: 2024 Swan River New Planting Site Precipitation: Oct 7 - Dec 31**

Measurement	Depth	Water Equivalent (m)	Area (ha)	Volume (liters)
Rainfall	54.3 mm	54.3 mm	10	5,430,000 L
<b>Total Accumulation = 5,430,000 L</b>				

## | UN SDG 6 - Clean Water and Sanitation



As Project Forest does not operate its own weather monitoring stations or gauges, we rely on historical data provided by the Government of Canada. Specifically, we reference the *"Past Weather and Climate"* database to obtain annual rainfall figures within a 25 km radius of each planting site. This data can be found [HERE](#).

Soils with high biodiversity—characterized by diverse vegetation and active microbial communities—function as natural filtration systems, enhancing the quality of infiltrating rainwater and snowmelt. In contrast to monoculture agricultural soils, which are typically compacted and exhibit low microbial diversity, biodiverse soils demonstrate superior capacity for water infiltration, retention, and purification.

As reforestation progresses, soils gradually shift from agricultural to forest profiles, marked by increased organic matter, improved structure, and changes in microbial communities. These developments enhance ecological function by promoting cleaner groundwater recharge, reducing surface runoff, and supporting more resilient and sustainable watershed hydrology.

# 170.4M

Liters of water accumulation  
at Swan River in 2024

---

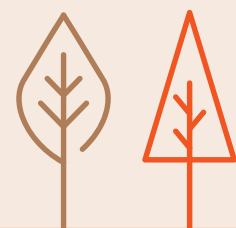
## | UN SDG 13 - Climate Action



**Goal:** Take urgent action to combat climate change and its impacts. By restoring forest ecosystems, this project contributes to:

**Carbon capture:** The 2024 survey indicates that the site is on track to remove 58,262 metric tonnes of CO<sub>2</sub>.

This carbon number reflects the updated calculations after the additional white spruce were planted in 2024.



# 2023 Annual Report

## Swan River First Nation

### Ecological Reconciliation Project

The Swan River First Nation Ecological Reconciliation Project stands as a multidimensional sustainability initiative. Through continued monitoring, adaptive management, and collaboration, Project Forest and our partners are creating tangible, lasting impacts across several pillars of the 2030 UN SDG Agenda.



# Purpose

## | UN SDG 15 - Life on Land

**Goal:** Protect, restore and promote sustainable use of terrestrial ecosystems, sustainably manage forests, combat desertification, and halt and reverse land degradation and halt biodiversity loss.

**Matching ESG Goals:**

- Providing clean air and water
- Improving biodiversity
- Re-establishing traditional landscapes



**Project Forest is making a positive impact through restoring degraded land to increase forest cover, enhance biodiversity, and promote the sustainable use of terrestrial ecosystems.**

**Indicator 15.1.1:** Forest area as a proportion of total land area



The Project Forest Swan River First Nation Ecological Reconciliation Project has increased forested area on the Swan River First Nation Reserve in Treaty 8 Territory in northern Alberta. A total of 71,850 seedlings were planted in two planting events occurring in 2021 and 2023, beginning the transition of 34 hectares of non-productive agricultural land back to native mixedwood forest. A third planting event is scheduled for 2024 when an additional 20,000 seedlings will be planted.

**71,850**  
Trees Planted

# Purpose

## | UN SDG 15 - Life on Land



The first Afforestation Survey at the Swan River First Nation Ecological Reconciliation Project was conducted in May 2023 indicated that 87.8% of plots surveyed were stocked with acceptable trees (SR + NSR-LIG). The site is deemed to be 87.8% stocked. A fill plant was recommended in one area ~4.2 ha that was documented as Not Sufficiently Restocked (NSR) however upon closer inspection was deemed unnecessary.

The survey results from the Fall 2023 Afforestation Survey (Appendix A - Swan River FN Afforestation Survey) at the Swan River First Nation Ecological Reconciliation Forest found an average total stocking rate (SR + NSR-LIG) of 86.7% (Figure 1), a decrease of 1.1% from 2022.

The surveyors found Canada thistle, a noxious weed, present on the site and recommend that Project Forest and Swan River First Nation determine the best approach for weed management. The Nation has expressed that they do not want to use chemicals or any other method of weed control on the site. Canada thistle does not compete with the trees, therefore we will pursue a let-it-grow approach at this time.

# 86.7%

Tree Survival Rate

# 98

Plots Sampled

**Figure 1: Acceptable Stocking Summary**

Type of Plot	# of Plots	% of Plots
Total Sufficiently Restocked (SR)	60	61.2
NSR-LIG Stocking	25	25.5
Not Sufficiently Restocked (NSR)	13	13.3
Total Stocking (SR + NSR-LIG/Total # of Plots)	85	86.7

**NSR-LIG** is an abbreviation of “not sufficiently restocked - let it grow”. The NSR-LIG status is applied to plots where under-height trees are left to grow with the expectation that this treatment will be sufficient for them to meet the SR standard at the next annual monitoring survey.

**Indicator 15.1.2:** Proportion of important sites for terrestrial and freshwater biodiversity that are covered by protected areas, by ecosystem type

**Project Forest partners with Indigenous communities to plant trees, shrubs, and food and medicinal plants that contribute to increasing the overall forested area in Western Canada.** By identifying non-forested land that could benefit from rewilding, we are enhancing the coverage of forest ecosystems, which are a critical component of terrestrial biodiversity. We plant forests in areas, and with communities, where we can guarantee the seedlings we plant today will be protected for future generations.

# Purpose

## | UN SDG 15 - Life on Land



The Project Forest Swan River First Nation Ecological Reconciliation Project is on the Swan River First Nation reserve in northern Alberta in the Central Mixedwood Forest Subregion of the Boreal Forest Natural Region. This land is managed, and its long-term protection overseen, by former Swan River First Nation Council Member, Dustin Twin.



“Success, to me, means taking my grandkids and great grandkids to the forest we’re planting with Project Forest. We will walk on a trail, sit with our ancestors’ spirits, and pick berries. It’s a feeling of security, of knowing my family can take care of themselves. I love that the people at Project Forest are willing to do things that will benefit future generations.” —**Dustin Twin**, Swan River First Nation Councillor

The Project Forest Swan River First Nation Ecological Reconciliation Project includes plant species that are native to the region and have ecological and cultural importance. By planting and maintaining these species, the community is contributing to their preservation, promoting biodiversity, and restoring the ecosystem. In October 2021, a total of 56,520 trees and shrubs were planted. A second planting event occurred in May 2023 with an additional 15,330 food, medicinal, and culturally significant plants being planted at the site.

A total of 14 different species have been planted at the site, all native or locally adapted to the site's ecological zone. By planting and maintaining native species, the Project Forest community is contributing to their preservation, promoting biodiversity, and restoring the ecosystem.

Our Afforestation Survey data shows that desirable herbaceous and woody vegetation is returning to the site. Common yarrow, avens, ferns, tansy mustard, clover, and other species that were not part of our planting plan are present in the area and a sign of natural regeneration on site. Their presence indicates a more suitable habitat has been created from our rewilding plan and overall site biodiversity is likely to increase.

# 14

Species Planted



Increase in Desirable Natural Vegetation

# Purpose

## | UN SDG 15 - Life on Land



### Indicator 15.2.1: Progress towards sustainable forest management

The Project Forest Rewilding Plans, Monitoring Protocols, and Remediation Actions are designed to ensure the health and success of our forest. *Sustainable forest management* balances the needs of the community with the long-term use of forest resources while preserving the ecological integrity and benefits the forest provides to people and the environment. As part of Project Forest's commitment to rewild land on behalf of our partners and the wider community, we employ a number of tools and metrics to provide scientific verification that our project sites will become mature forests that will benefit the environment and surrounding communities today, and generations to come.

### Sustainable Forest

**Management** is a way of using and caring for forests to maintain their environmental, social, cultural and economic values and benefits over time (NRCAN, 2024).



Site Preparation at Swan River First Nation

## Rewilding Plans

Prior to planting a forest, Project Forest assesses the land and identifies site limiting factors. A Rewilding Plan is created and site limiting factors are addressed to ensure that the seedlings planted have the best chance of survival (Appendix B - Swan River FN Rewilding Plan).

Site preparation was completed at the Project Forest Swan River First Nation Ecological Reconciliation Project in July 2021. The entire planting area was either excavator mounded or rip plowed due to the extreme soil compaction, thick grass mat and high vegetation competition. In

# Purpose

## | UN SDG 15 - Life on Land



May 2022, 56,000 brush mats were deployed on site to help mitigate vegetation competition. Since the initial site prep, our tree planters have reported low compaction at subsequent planting events on site.

### Monitoring Protocols

The Project Forest Monitoring Plan requires that 2.44 plots per hectare are surveyed and each plot location is permanently marked. This resulted in 98 plots being sampled on the site. The survey data collected is used to prescribe future monitoring and maintenance events. We budget for a 25% fill plant for each project site in the event of significant tree mortality within the first six years. Our monitoring protocol ensures the seedlings planted are on a trajectory to becoming a mature forest through annual monitoring for up to six years post-planting.

### Remediation Activities

In the event of substantial tree mortality prior to the site passing the standard set out in our monitoring protocols, Project Forest will conduct a fill plant. A fill plant will occur when a 'Not Sufficiently Restocked (NSR)' area is identified and the site is less than 80% stocked. The Fall 2023 survey did not recommend any remedial actions on the site but recommended a weed management plan due to the presence of the noxious weed, Canada thistle (Appendix A - Swan River FN Afforestation Survey).

**Indicator 15.3.1:** Proportion of land that is degraded over total land area.

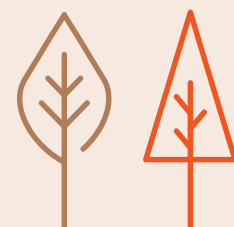
**Project Forest is rewilding degraded land that has been disturbed and has not recovered through normal ecological processes.**

The Project Forest Swan River First Nation Ecological Reconciliation Project site was previously farmed and grazed, however, prior to rewilding it sat stagnant and unused. Noxious weeds like Canada thistle had overtaken the site, rapidly spreading and replacing native plants. The clay soil had been severely compacted from years of cattle grazing and flooding events from the adjacent Swan River.

Rewilding degraded ecosystems has several positive effects including, an improvement to soil health, increased biodiversity, habitat for birds and animals, ground water filtration and improved air quality.

### Ecosystem degradation

is defined as, "an event or process that reduces the productivity or value of an ecosystem, or that delays or prevents an ecosystem from recovering from disturbance through normal successional processes." (Haeussler et al., 2002)



# Purpose

## | UN SDG 13 - Climate Action

**Goal:** Take urgent action to combat climate change and its impacts.

**Matching ESG Goals:**

- Reducing GHG emissions
- Experiencing nature in an educational and interactive way



**The forests we plant can have a significant impact on mitigating climate change.**

**Indicator 13.2.2:** Total greenhouse gas emissions per year

Forests act as carbon sinks, absorbing carbon dioxide (CO<sub>2</sub>) from the atmosphere through photosynthesis and storing it in their biomass and soil. By planting forests, we increase the amount of CO<sub>2</sub> sequestered, thereby reducing the concentration of greenhouse gases (GHGs) in the atmosphere. This helps mitigate climate change by reducing the amount of CO<sub>2</sub> that contributes to global warming (NRCAN, 2022).

The amount of CO<sub>2</sub> projected to be removed from the atmosphere over the lifetime of the Project Forest Swan River First Nation Ecological Reconciliation Project is 47,480 metric tonnes. The estimated lifetime of a forest is 150 years.

Project Forest uses the [Carbon Budget Model of the Canadian Forest Sector \(CBM-CFS3\)](#) modelling framework developed by Natural Resources Canada to assess the impacts of our forests on carbon. This is the national standard for reporting on forest carbon.

# 47,480

**Metric tonnes of CO<sub>2</sub> project to be removed from the air.**

### **Carbon Budget Model of the Canadian Forest Sector**

is an aspatial, stand- and landscape-level modelling framework used for international reporting of the forest carbon balance of Canada's managed forest (NRCAN, 2024).

# Purpose

## | UN SDG 13 - Climate Action



**Target 13.3:** Improve education, awareness-raising and human and institutional capacity on climate change mitigation, adaptation, impact reduction and early warning

**Project Forest provides our partners and the wider community with the opportunity to participate in educational activities through our Community and Corporate Outreach Program.** Experiencing nature in an educational and interactive way enriches knowledge, fosters a connection with the environment, promotes well-being, and encourages responsible environmental behaviour. These are some of the engagement activities we conducted in 2023:

### **Lunch and Learns, Keynote Presentations and Panel Discussions**

- Overview of the rewilding process, our projects, and stories of community impact
- Stakeholder project impacts and opportunity to engage with the Project Forest team

### **Corporate Tree Planting Events**

- In-person, hands-on volunteering opportunities for Silver, Gold and Platinum financial partners
- Educational talks around seedling physiology, forest succession, tree planting technique, tree planting survey methodology, seed collection, plant identification, and traditional plant uses

### **Indigenous Engagement**

- Opportunity to learn from Indigenous Knowledge Keepers and Elders in various capacities from presentations, interviews and talks, to one-on-one exchanges at our Corporate Planting Events and Annual Partner Celebration

### **Podcast, radio, tv and webinar interview**

- Overview of the rewilding process for general audiences
- Discussions of more in-depth topics such as working with Indigenous communities, operating a non-profit, and sustainable forest practices

### **Annual Partner Celebration**

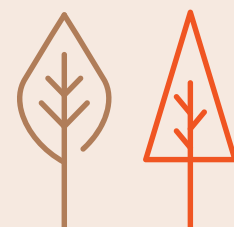
- Presentations featuring a wide range of speakers from the Project Forest community
- Focus on Indigenous reconciliation through rewilding, sustainable business practices, and community investment

### **Seedling and Seed Kit giveaway events throughout the year**

- Opportunity to interact with the Project Forest team
- Celebrate the impact your organization is making
- Engage with the Project Forest community

# 10

**Project Funding Partners**



# Purpose

## | UN SDG 11 - Sustainable Cities and Communities

**Goal:** Make cities and human settlements inclusive, safe, resilient and sustainable



### Matching ESG Goals:

- Generating social & economic growth
- Advancing health & wellbeing
- Developing deeply ingrained Indigenous relationships

**Restoring degraded land can have a positive impact on communities through creating safe, resilient, and sustainable natural spaces.**

**Target 11.4:** Strengthen efforts to protect and safeguard the world's cultural and natural heritage



Sweetgrass Teachings at Swan River First Nation



**Forests hold immense cultural and spiritual significance for Indigenous Peoples.** Through planting forests in Indigenous communities, we provide opportunities to preserve cultural heritage, traditional knowledge, and spiritual connections to the land. Forests provide a space for traditional land-use activities including ceremonies, hunting, and gathering food and medicinal plants.

# Purpose

## | UN SDG 11 - Sustainable Cities and Communities



Planting native species can re-establish the natural heritage of the landscape. Project Forest works with Indigenous communities to learn about what once grew on the land and which plants are significant to their culture and diet. In collaboration with the community, we create planting plans that consider their needs, the site conditions and the natural region. Project Forest works closely with Registered Professional Foresters and Environmental Professionals to ensure we are planting the right plant in the right place for the right reason.

In May 2023, more than 15,330 food-bearing and medicinal plants and shrubs were planted at the site to complete the project. Nine native plants with cultural significance to the Nation were planted: saskatoon, raspberry, wild strawberry, American mountain ash, bog cranberry, dewberry, wild rose, red osier dogwood, and buffaloberry.

Indigenous communities have extensive knowledge about local plant species, their cultivation, and their traditional uses. By planting food and medicine forests, traditional knowledge is preserved and utilized, fostering cultural identity and strengthening community resilience. The sharing of intergenerational knowledge, as Elders share their experience and the youth learn traditional practices, preserves both our cultural and natural heritage.

# 9

Species Planted in 2023

# Purpose

## | UN SDG 11 - Sustainable Cities and Communities



**Indicator 11.a.1:** Number of countries that have national urban policies or regional development plans that (a) respond to population dynamics; (b) ensure balanced territorial development; and (c) increase local fiscal space

**The forests we plant provide areas for recreation and traditional land use within the community.** Our funding partners finance the rewilding costs including seedlings, planting, and labour, allowing communities to allocate more funds to services and infrastructure.

The Project Forest Swan River First Nation Ecological Reconciliation Project provides the Swan River First Nation with an area for traditional land use activities like ceremonies, hunting and gathering, recreation and knowledge exchange all within 15 minutes of the band office. The Project Forest funding partners are financing the seedlings, tree planting and labour costs to rewild this section of land, allowing the Nation to allocate more funds to services and infrastructure.

When working with Indigenous communities, Project Forest offers the first right of refusal for site preparation and maintenance work to the Nation. Rewilding projects require labour to complete, including but not limited to:

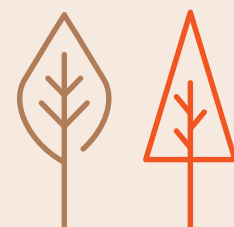
- Mechanical site preparation
- Seed collection
- Tree planting
- Vegetation management
- Survival assessment survey and data collection
- Cover crop deployment
- Construction work

By investing in rewilding, Project Forest funding partners are creating employment opportunities. The income earned by individuals through these jobs can have a positive economic impact, leading to increased tax revenues for the government and expanding **local fiscal space**.

Swan River First Nation received economic benefit through administering the site preparation program. The Nation invoiced Project Forest for the work carried out by three local contractors.

### Local fiscal space

is defined as the sum of financial resources available to a government for the improved delivery of basic services without any prejudice to the sustainability of a government's financial position (Heller, 2005).



# Positive Impact

## | UN SDG 2 - Zero Hunger

**Goal:** End hunger, achieve food security and improved nutrition and promote sustainable agriculture.



**Planting a forest can have indirect but important impacts on addressing hunger, achieving food security, improving nutrition, and promoting sustainable agriculture.**

**Target 2.1:** By 2030, end hunger and ensure access by all people, in particular the poor and people in vulnerable situations, including infants, to safe, nutritious and sufficient food all year round.

**Indigenous food and medicine forests incorporate a wide variety of plant species, including vascular plants, shrubs, fungus, bushes, and trees.** This diverse range of edible and medicinal plants provides a broad selection of food and healing sources for the community year round.

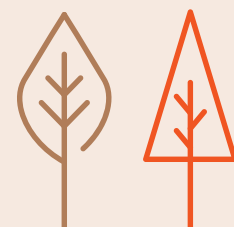
By growing food and medicinal plants, Indigenous communities can reduce their reliance on external sources and commercial markets. This enhances the community's self-sufficiency and food sovereignty.

**Target 2.4:** By 2030, ensure sustainable food production systems and implement resilient agricultural practices that increase productivity and production, that help maintain ecosystems, that strengthen capacity for adaptation to climate change, extreme weather, drought, flooding and other disasters and that progressively improve land and soil quality.

Indigenous Food and Medicine Forests are designed to be locally appropriate and suited to the specific environmental conditions of the region. By planting native plant species that are well-adapted to the local climate, soil types, and pests, these forests provide a more reliable and sustainable source of food. They require less water and fertilizers, and have reduced vulnerability to pests and diseases.

# 15,330

**Food-bearing, Medicinal, and Cultural Plants, Shrubs, and Trees**



# Positive Impact

## | UN SDG 3 - Good Health and Well-Being

**Goal:** Ensure healthy lives and promote well-being for all, at all ages.



### Planting a forest can have several positive impacts on ensuring healthy lives and promoting well-being for all ages.

**Target 3.9:** By 2030, substantially reduce the number of deaths and illnesses from hazardous chemicals and air, water and soil pollution and contamination

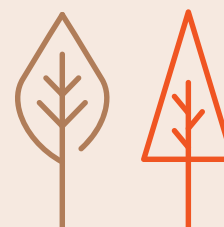
**Forests act as natural air filters by absorbing pollutants and particulate matter from the atmosphere.** Trees remove harmful gases by absorbing them through their leaf stomata, filtering these chemicals from the air. Particulate matter is intercepted by the tree's surfaces. When it rains, the particles are washed off and carried to the ground. Planting forests can help improve air quality, by reducing the exposure of communities to harmful pollutants (Nowak et al., 2014).

In addition to improving air quality, forests provide opportunities for people to connect with nature, enjoy recreational activities, and experience the positive physical and mental health effects of spending time outdoors. They also provide various ecosystem services that indirectly contribute to our health and well-being.

Some of the important ecological services provided by forests include:

- cleaning water through water filtration
- cleaning air through oxygen production and absorption of pollutants
- rebuilding of soils and restoration of nutrients
- holding back floodwaters and releasing needed water into rivers and streams
- absorbing CO<sub>2</sub> from the atmosphere
- maintaining biodiversity by providing habitat for countless species

These services all indirectly impact human health and well-being.



# Positive Impact

## | UN SDG 6 - Clean Water and Sanitation

**Goal:** Ensure availability and sustainable management of water and sanitation for all



**The forests we plant can have positive impacts on ensuring the availability and sustainable management of water.**

**Indicator 6.3.2:** Proportion of bodies of water with good ambient water quality.

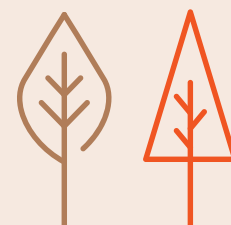
**Forests filter, purify and improve the quality of our water. Tree roots help retain soil and reduce the transport of pollutants into water bodies.** Planting forests in watershed areas can contribute to protecting water quality, ensuring access to clean water for communities. (NRCAN, 2021)

The Project Forest Swan River First Nation Ecological Reconciliation Project is located on the banks of the Swan River, south of Lesser Slave Lake in the Lesser Slave Lake Watershed.

While planting forests alone cannot solve all our water-related challenges, they do offer nature-based solutions to help achieve sustainable management of our water resources.

**Target 6.6:** By 2020, protect and restore water-related ecosystems, including mountains, forests, wetlands, rivers, aquifers and lakes

Forests act as natural sponges and filters, absorbing rainfall and gradually releasing it while purifying it as it passes through the ecosystem. By restoring forests, we can enhance water quality, reduce erosion, and promote water retention in the landscape.



# Partners

| Funding Partners



Project Forest Swan River First Nation Ecological Reconciliation Project

## Our work is not possible without you.

Thank you to the Project Forest Swan River First Nation Ecological Reconciliation Project funding partners!



# References

- Haeussler, S., Bedford, L., Leduc, A., Bergeron, Y. & Kranabetter, J.M. (2002). Silvicultural disturbance severity and plant communities of the southern Canadian boreal forest. *Silva Fennica* 36(1): 307–327.
- Heller, P. S. (2005). *IMF Policy Discussion Paper: Understanding Fiscal Space*. International Monetary Fund. <https://www.imf.org/external/pubs/ft/pdp/2005/pdp04.pdf>
- IPCC. *Climate Change and Land: An IPCC Special Report on Climate Change, Desertification, Land Degradation, Sustainable Land Management, Food Security, and Greenhouse Gas Fluxes in Terrestrial Ecosystems*. Edited by P.R. Shukla et al., 2019, in press.
- NRCAN. (2024, April 4). *Carbon Budget Model for the Canadian Forest Sector*. Government of Canada. <https://natural-resources.canada.ca/climate-change/climate-change-impacts-forests/carbon-accounting/carbon-budget-model/13107>
- NRCAN. (2022, May 31). *Forest Carbon*. Government of Canada. <https://natural-resources.canada.ca/climate-change-adapting-impacts-and-reducing-emissions/climate-change-impacts-forests/forest-carbon/13085>
- NRCAN. (2024, June 21). *Sustainable Forest Management*. Government of Canada. <https://natural-resources.canada.ca/our-natural-resources/forests/sustainable-forest-management/sustainable-forest-management-canada/24361>
- NRCAN. (2021, February 16). *Water*. Government of Canada. <https://natural-resources.canada.ca/our-natural-resources/forests/sustainable-forest-management/conservation-and-protection-canadas-forests/water/13207>
- Nowak, D. J., Hirabayashi, S., Bodine, A., & Greenfield, E. (2014). Tree and forest effects on air quality and human health in the United States. *Environmental Pollution*, 193, 119-129.
- UNFCCC. *Glossary of CDM Terms*. EB41, 2008. Quoted in Global Canopy Programme, “Glossary of Terms,” *The Little REDD Book: A Guide to Governmental and Non-Governmental Proposals for Reducing Emissions from Deforestation and Degradation*, Global Canopy Foundation, November 2008.
- Tiquia, S. M., & Tam, N. F. Y. (2000). *Microbial activities in composts during the composting process*. *Bioresource Technology*, 75(3), 193–200.
- Young, I. M., & Crawford, J. W. (2004). *Interactions and self-organization in the soil-microbe complex*. *Science*, 304(5677), 1634–1637.
- Fierer, N., & Jackson, R. B. (2006). *The diversity and biogeography of soil bacterial communities*. *PNAS*, 103(3), 626–631.

# Appendix A - Survey Report

Afforestation Survey Cover Page				
Project site: Swan River				
Survey Date(s)	October 6-7, 2024	Total Plots	98	
		Planted Area	34 ha	
Stocking Calculations				
Type of Plot	# of Plots	% of Plots	Meet Final Criteria	% of Plots
SR with Acceptable Conifer trees	37	37.8	8	8.2
SR with Acceptable Deciduous trees	0	0.0	0	0
SR Acceptable Shrubs	18	18.4	13	13.3
SR with Acceptable Conifer & Deciduous trees	1	1.0	0	0
SR with Acceptable Conifer trees & Shrubs	19	19.4	16	16.3
SR with Acceptable Deciduous trees & Shrubs	4	4.1	3	3.1
SR with Acceptable Conifer & Deciduous trees & shrubs	1	1.0	1	1.0
NSR-LIG with Conifer	2	2.0	0	0
NSR-LIG with Deciduous	0	0.0	0	0
NSR-LIG with Shrub	6	6.1	0	0
NSR-LIG with Conifer & Deciduous	0	0.0	0	0
NSR-LIG with Conifer & Shrubs	1	1.0	0	0
NSR-LIG with Deciduous & Shrubs	0	0.0	0	0
NSR-LIG with Conifer & Deciduous trees & shrubs	1	1.0	0	0
NSR -No Acceptable Woody species present	8	8.2	0	0
Acceptable Stocking Summary				
Plot Stocking Status	# of Plots	% of Plots		
SR Plots	80	81.6		
NSR-LIG Stocking	10	10.2		
NSR (excludes NSR-LIG)	8	8.2		
Total Stocking (SR + NSR-LIG):	90	91.8		
Herbaceous Vegetation Observed on Site			Noxious Weeds	
Common bent	Goldenrod		Canada Thistle	
Clover spp.	Field sagewort			
Sedge spp.	Nettle spp.			
Smooth brome	Lesser meadow rue			
Dandelion	Wild strawberry			
Common Yarrow	Cow parsnip			
Common plantain	Pennycress			
Agrimonia	Mug wort			
Golden currant				
Pea vine spp.				
Project Comments:				
Overall, the planted seedlings seem to be doing well.				
Surveyors reported heavy/thick grass and grass matting, Canada thistle, and dead/absent seedlings in some mounds.				

Plot	Tree & Shrub Stocking																Status	Tallest in Plot		Risk factors	
	Acceptable		Acceptable		Acceptable		Acceptable		Under Height		Under Height		Under Height		Under Height			Species	Height (cm)	Evidence of: Damage, Disease, Competition,	Noxious Weeds
	Species	Number	Species	Number	Species	Number	Species	Number	Species	Number	Species	Number	Species	Number	Species	Number					
SR_01	White Spruce	1	Tamarack	1													SR	Tamarack	179	Grass	
SR_02	Raspberry	1								Raspberry	10	Trembling Aspen	1	Willow spp.	1		SR	Raspberry	121		
SR_03	Trembling Aspen	1	Raspberry	9						Trembling Aspen	9	Raspberry	11				SR				Grass mat
SR_04	Tamarack	2								Raspberry	11	Willow spp.	11	Trembling Aspen	1	Wild rose	1	SR	Tamarack	188	Grass
SR_05	Tamarack	1								Raspberry	2						SR	Tamarack	183		
SR_06	White Spruce	2	Raspberry	1						Raspberry	4	Willow spp.	11	Red Osier Dogwood	1		SR	Raspberry	83		
SR_07	White Spruce	1								Willow spp.	2						SR	White Spruce	38	Grass	
SR_08										White Spruce	1						NSR-LIG	White Spruce	27	Grass and next to access road	
SR_09	Lodgepole Pine	1	Raspberry	1						Willow spp.	11	Raspberry	10				SR	Raspberry	87		
SR_10	Tamarack	1								Willow spp.	11	White Birch	1				SR	Tamarack	93	Grass, thistle	Present
SR_11	White Spruce	1	Raspberry	1						Raspberry	10	Willow spp.	11				SR	Raspberry	128	Grass	
SR_12	Raspberry	1								Raspberry	10	White Spruce	1				SR	Raspberry	125		
SR_13	Tamarack	2								Raspberry	11	Willow spp.	2				SR	Tamarack	170		
SR_14	Tamarack	1								Raspberry	11	Willow spp.	11				SR				Grass mat
SR_15																	NSR				
SR_16	Raspberry	1								Raspberry	10						SR	Raspberry	125	Grass	
SR_17	White Spruce	1								Willow spp.	11						SR	White Spruce	54	Thick grass mat	
SR_18																	NSR				
SR_19	Tamarack	2								Willow spp.	11	Raspberry	4				SR	Tamarack	230	Thick grass	
SR_20	Tamarack	1								Willow spp.	9						SR	Tamarack	191	Grass	
SR_21	White Spruce	1															SR	White Spruce	46	Grass and thistle	Present
SR_22	Lodgepole Pine	1	Raspberry	1						Raspberry	10						SR	Raspberry	105		
SR_23	White Spruce	1								Raspberry	11	Willow spp.	2				SR	Raspberry	42		
SR_24	White Spruce	1	Raspberry	1						Raspberry	10	Willow spp.	9				SR	Raspberry	80	Grass	
SR_25	White Spruce	2								Raspberry	5						SR	Raspberry	45	Some grass small mounds	
SR_26	White Spruce	1								Raspberry	1						SR	Raspberry	47	Thick grass	
SR_27	White Spruce	1	Balsam Poplar	1						Balsam Poplar	1	Willow spp.	2				SR	Balsam Poplar	70	Grass, thistle, pennygrass, mugwort	Present
SR_28	Snowberry	1												Snowberry	10		SR	Snow berry	78	Grass mat, pea, brome, thistle	
SR_29	Snowberry	1												Snowberry	10		SR	Snow berry	103	Grass, thistle,	Present
SR_30	Lodgepole Pine	1								Raspberry	9	Saskatoon	1				SR	Lodgepole Pine	53	Grass, thistle	Present
SR_31	Willow spp.	1								Lodgepole Pine	1	Willow spp.	10	Raspberry	4		SR	Willow spp.	70		
SR_32	White Spruce	1	Raspberry	1						Raspberry	10	Willow spp.	11				SR	Raspberry	78		
SR_33	Lodgepole Pine	1								Willow spp.	11	Raspberry	7				SR	Lodgepole Pine	82		
SR_34	Raspberry	1								Willow spp.	11	Raspberry	1				SR	Raspberry	79		
SR_35	Raspberry	1								Raspberry	9	White Birch	1				SR	Raspberry	105	Thick grass mat	
SR_36										Willow spp.	11						NSR-LIG	Willow spp.	30	Thick grass mat	
SR_37	Raspberry	1								Raspberry	7	Willow spp.	1				SR	Raspberry	96		
SR_38										Willow spp.	6						NSR-LIG	Willow spp.	41		
SR_39	Snowberry	1								Wild Rose	2	Snowberry	4	Currant	1		SR	Snowberry	86		
SR_40										Raspberry	4	White Spruce	1	Trembling Aspen	1		NSR-LIG	Raspberry	40		
SR_41	White Spruce	1															SR	White Spruce	82	Thick grass	
SR_42	White Spruce	1															SR	White Spruce	48		
SR_43																	NSR				
SR_44																	NSR				Thick grass mat with thistle
SR_45	Lodgepole Pine	1															SR	Lodgepole Pine	83		
SR_46																	NSR				Grass, thistle
SR_47										White Spruce	1	Willow spp.	2				NSR-LIG	Willow spp.	47	Thick grass	Present
SR_48	White Spruce	1	Saskatoon	7	Snowberry	3				Honeysuckle	11	Raspberry	1	Snowberry	11		SR	Snow berry	157		
SR_49	White Spruce	1															SR	White Spruce	50		
SR_50	Lodgepole Pine	1	Raspberry	1						Raspberry	4	Snowberry	5	Rowan	1		SR	Raspberry	96	Thick grass	
SR_51																	NSR				Thick grass mat with thistle
SR_52	White Spruce	1															SR	White Spruce	56	Thick grass mat	Present





**Swan River First Nation  
Survey Plot Status - Map 1  
Fall 2024**

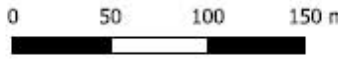
**Project Partners:**



- Plot Status**
- NSR-
  - NSR-LIG-C
  - NSR-LIG-CS
  - NSR-LIG-S
  - SR-C
  - SR-CD
  - SR-CS
  - SR-DS
  - SR-S
  - NSR-LIG-CDS
  - Project Boundary



Date Created: 2025-02-05  
 Project CRS: EPSG:3400  
 Source: Google Satellite  
 Created By: Tree Time Services Inc.  
 Scale: 1:2,500





**Swan River First Nation  
Survey Plot Status - Map 2  
Fall 2024**

**Project Partners:**

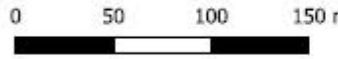


**Plot Status**

- NSR-LIG-S
- SR-C
- SR-CD
- SR-CS
- SR-S
- Project Boundary



Date Created: 2025-02-05  
 Project CRS: EPSG:3400  
 Source: Google Satellite  
 Created By: Tree Time Services Inc.  
 Scale: 1:2,500





### Swan River First Nation Survey Plot Status - Map 3 Fall 2024

#### Project Partners:



#### Plot Status

- SR-C
- SR-CDS
- SR-CS
- SR-DS
- SR-S
- Project Boundary



Date Created: 2025-02-05  
Project CRS: EPSG:3400  
Source: Google Satellite  
Created By: Tree Time Services Inc.  
Scale: 1:2,500

0 50 100 150 m



Plot SR\_02



Plot SR\_03



Plot SR\_16



Plot SR\_27



Plot SR\_30



Plot SR\_47



Plot SR\_50





Plot SR\_69



Plot SR\_77



Plot SR\_89

---



Plot SR\_93

---





## Project Forest Monitoring Assessment Summary Sheet

Project Name	Swan River First Nation
Applicability	Trajectory of re-wilding success
Landowner	Swan River First Nation
Site Location	55.340255,-115.398149
Year Planted	2021
Assessment #:	3

### First and last name of qualified surveyors (or as attached):

Krishanda Zimmer, Lawrence Fraser

### Disturbance Areas and areas to be removed from reforestation project area(s):

No areas will be removed from the project area.

As per the Project Forest Monitoring Program, all area(s) impacted by forest fire, insects or industrial development will be removed from the afforestation project area. No such disturbance were recorded.

### Summary of Preventive and Corrective Actions:

It is recommended that:

1. Leave the NSR-LIG areas, as there is a reasonable likelihood that a sufficient percentage of NSR-LIG sites will become SR sites within the coming years.
2. There is Canada thistle present. Project Forest should discuss this with Swan River First Nation and determine the best approach for weed management on the site.

### Declaration:

I do hereby declare that this submission:

- a) Adheres to all components of the required Quality Assessment/Quality Control program,
- b) Includes only surveys that have been conducted according to the methods detailed in the Project Forest – Swan River Reforestation Monitoring Program, and,
- c) Complies with the requirements for report timing and format.

Validated/Signed by:



Registration #

1838

Date:

January 29, 2025

Print Name:

Lindsay Dent

Company:

Tree Time Services Inc.

# Appendix B - As Planted Report



## Project Forest – Swan River First Nation

### Project Forest Swan River2: As-Planted Report

January 15, 2025



Prepared by:



## **Table of Contents**

1. Project Implementation Summary .....	2
Appendix A: Project Maps .....	3
Appendix B: Site Preparation Photos .....	4
Appendix C: Daily Updates.....	7

## 1. Project Implementation Summary

<b>Site location:</b>	Swan River First Nation
<b>Site Prep Dates:</b>	September 9, 2024
<b>Planting Dates:</b>	October 5, 2024 - October 6, 2025
<b>Carbon Sequestered Over 150 years:</b>	10,781.6 tonnes of CO2 projected to be removed from the air over the course of 150 years
<b>Number of Trees Planted:</b>	21,060
<b>Number of Ha Planted:</b>	10.5 ha
<b>Subcontractors Involved:</b>	Producers Equipment Co. [Site prep] Jaymar Hauling (88) Ltd. [Swamp mats delivery, placement, and rental] Tree Time Services [Project management, seedlings, and planting]
<b>Planted Species Composition</b>	
<b>Species</b>	<b>Quantity</b>
White Spruce	21,060

## Appendix A: Project Maps

Planned Species	Planned Species Number	Planted Species	Planted Species Number
Sw	21060	Sw	21060







**Project Forest**  
**Swan River First Nation**  
**As Planted**

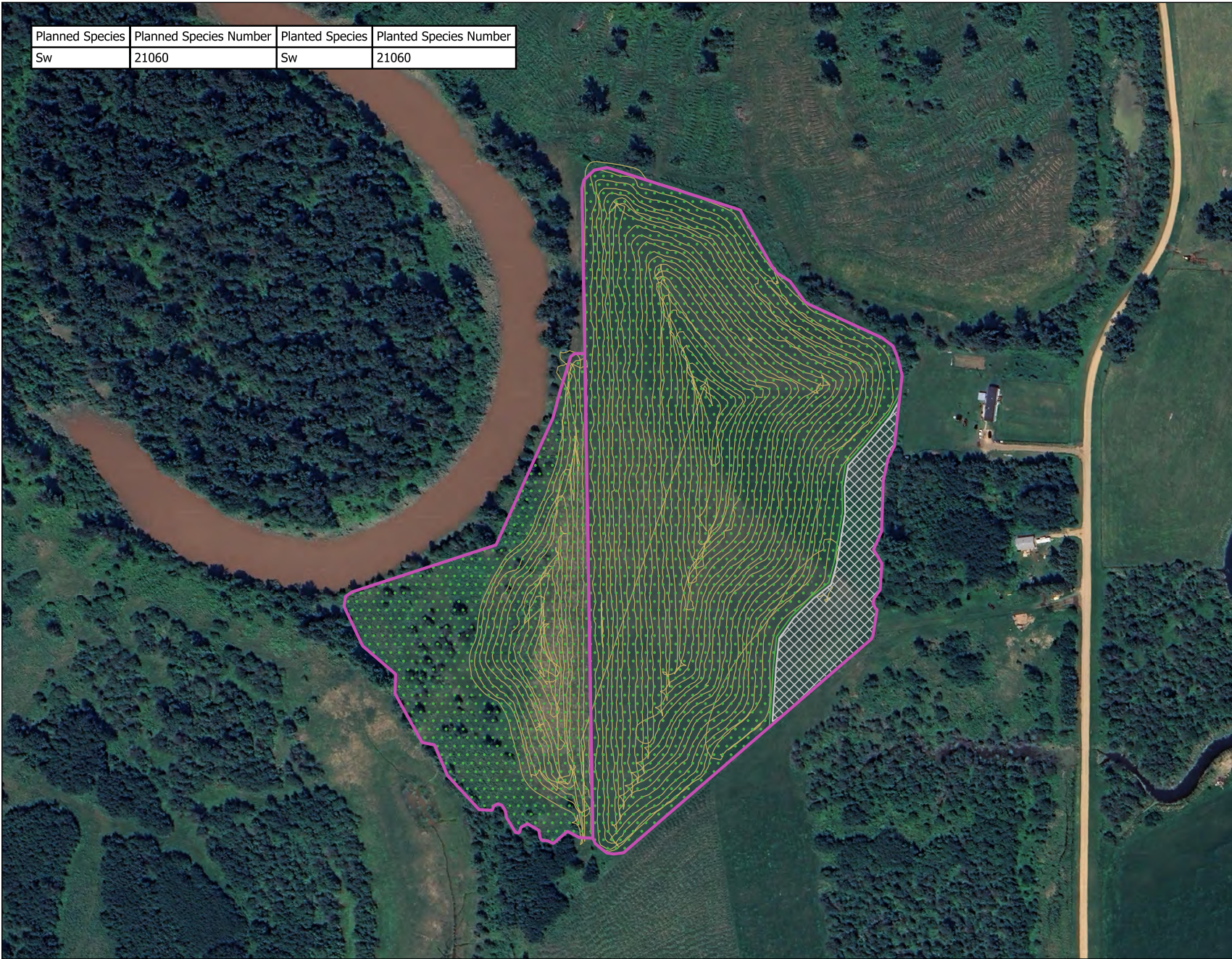
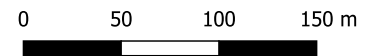
**Project Partners:**



**Legend:**

-  Project Boundary
-  As Planted
-  Not Planted
-  Site Prep Line

Date Created: 10/01/2025  
 Project CRS: EPSG:3400  
 Source: Google Satellite  
 Created By: Tree Time Services Inc.  
 Scale: 1:2,500





**Project Forest - Swan  
River First Nation  
Proposed Planting Areas**

**Project Partners:**



**Legend:**

- Project Areas
- Section 1
  - Section 2

Date Created: 03/11/2023  
Project CRS: EPSG:3400  
Source: Google Satellite  
Created By: Tree Time Services Inc.  
Scale:1:2,500

0 50 100 150 m



## Appendix B: Site Preparation Photos



Swan River 2, 2024



## Appendix C: Daily Updates

Date: October 5, 2024

Project Name: 2024\_Fall\_PF\_SwanRiver

Working Area: Swan River FN

Crew Members:

Name	Position
Leighen Janzen	Field Supervisor
Chloe Gylander	Field Assistant
Teegan McMullin	Field Assistant
Rory esler	Field Assistant

Weather: Sunny

Health and Safety: The hazard ID is watching ergonomics and using proper lifting and planting techniques.

Summary of Activities: planting trees

Issues: None

Next Day Plan:

Site conditions

Date	Site	Compaction (Low, Mod, Severe)	Competition (Low, Mod, Severe)	Comments
October 5, 2024	SRFN	Low	Low	.

Category Breakdown

Low: maybe some additional difficulty (less than 10 seconds)

Moderate: planting time more than normal

Severe: shovel cannot penetrate soil enough to plant seedling at all or without significant effort (more than 40 seconds)

Seedlings Planted

Date	Site	Species	Order ID	Seedlings Planted	Seedlings Remaining
October	SRFN	Sw	13241	11,820	9,240

Photos:



Site/Description



Site/Description



Site/Description



Site/Description

Date: October 6, 2024

Project Name: 2024\_Fall\_PF\_SwanRiver

Working Area: Swan River FN

Crew Members:

Name	Position
Leighen Janzen	Field Supervisor
Chloe Gylander	Field Assistant
Teegan McMullin	Field Assistant
Rory esler	Field Assistant

Weather: Sunny

Health and Safety: The hazard ID today is watching slip trips and fall, and by being aware of footing and surroundings.

Summary of Activities: planting trees

Issues: None

Next Day Plan: Project complete

Site conditions

Date	Site	Compaction (Low, Mod, Severe)	Competition (Low, Mod, Severe)	Comments
October 6, 2024	SRFN	Low	Low	.

Category Breakdown

Low: maybe some additional difficulty (less than 10 seconds)

Moderate: planting time more than normal

Severe: shovel cannot penetrate soil enough to plant seedling at all or without significant effort (more than 40 seconds)

Seedlings Planted

Date	Site	Species	Order ID	Seedlings Planted	Seedlings Remaining
October 6, 2024	SRFN	Sw	13241	9,240	0

Photos:



Site/Description



Site/Description

